

# TEST REPORT

**Applicant:** Flashbay Electronics  
**Address:** Building2 ,Jixun Industrial Park ,Xinjiao ,Dong'ao Village ,Shatian Town ,Huiyang District ,Huizhou City , Guangdong Province,P.R.China

**The following sample(s) was/were submitted and identified on behalf of the client as:**

Sample name: Bluetooth Speakers  
Model: Ray/R  
Manufacturer & factory: Flashbay Electronics  
Address: Building2 ,Jixun Industrial Park ,Xinjiao ,Dong'ao Village ,Shatian Town ,Huiyang District ,Huizhou City , Guangdong Province,P.R.China

Sample No.: S241022030047  
Sample Received Date: 2024-10-24  
Testing Period: 2024-10-24~ 2024-12-10

**Test Requirement:**

As specified by client, to determine the Lead(Pb), Cadmium(Cd), Mercury(Hg), Hexavalent Chromium (Cr(VI)), Polybrominated Biphenyls(PBBs), Polybrominated Diphenyl Ethers(PBDEs), Bis-(2-ethylhexyl) Phthalate (DEHP), Benzyl butyl Phthalate (BBP), Dibutyl Phthalate (DBP) and Diisobutyl Phthalate(DIBP)contents in the submitted sample(s) in accordance with RoHS Directive (EU) 2015/863 amending Annex II to Directive 2011/65/EU.

**Conclusion**

Pass

**Test Result(s):** Please refer to the following page(s);

**Test Method:** Please refer to the following page(s);

Compiled by:

Zane. L

Reviewed by:

Luetta Mo

Approved by:

May Li

Date:

2024-12-11

**Sample Description:**

No.	Sample name	Description
1	Shell	White plastic shell
2		Gray rubber pad
3		Black plastic sheet with glue
4		White plastic shell
5		Silver metal rivet
6		Transparent double-sided adhesive
7		White foam glue
8		Yellow transparent adhesive tape
9		Silver metal screw(large)
10		Silver metal screw(small)
11	Microphone	Black rubber pad
12		Black felt with glue
13		Microphone body
14		Red wire jacket
15		Black wire jacket
16	Wire core	
17	Speaker	Silver metal shell
18		Silver metal of magnet
19		White cardboard
20		Silver metal contact pin
21		Tin solder
22		Silver metal rivet
23		Cupreous metal silk
24		Black rubber ring
25		Transparent colloid
26		Black paper cone
27		Black fabric
28		Cupreous metal coil
29		Yellow pieces of paper
30		Brown tape
31		Black plastic sheet
32		Red wire jacket
33		Black wire jacket
34		Wire core
35		PCBA TB PCB01-type C v0.5
36	Silver metal shell of type-c interface	
37	Gray plastic of type-c interface	
38	Silver metal pin of type-c interface	
39	Black plastic button of contact switch	
40	Silver metal sheet of contact switch	

41	PCBATB PCB01-type C v0.5	Silver metal shrapnel of contact switch
42		Black plastic base of contact switch
43		Tin solder
44		Aluminum shell of electrolytic capacitor
45		Anode foil of electrolytic capacitor
46		Cathode foil of electrolytic capacitor
47		Electrolytic paper of electrolytic capacitor
48		Rubber pad of electrolytic capacitor
49		Electrode pin of electrolytic capacitor
50		Black plastic base of electrolytic capacitor
51		SMD chip
52		SMD crystal
53		SMD inductor
54		SMD LED
55	Battery	Yellow transparent adhesive tape
56		Transparent double-sided adhesive
57		Green PCB
58		Tin solder of PCB
59		Silver metal sheet of PCB
60		SMD resistor of PCB
61		Red wire jacket
62		Black wire jacket
63		Wire core

**Test Result(s):**
**Lead(Pb), Cadmium(Cd), Mercury(Hg), Hexavalent Chromium (Cr(VI)), Polybrominated Biphenyls (PBBs), Polybrominated Diphenyl Ethers(PBDEs)**

Part No.	Test Items		XRF Screening Result(mg/kg)	Chemical Test Result(mg/kg)	Conclusion
1	Pb		BL	/	Pass
	Cd		BL	/	
	Hg		BL	/	
	Cr	Cr(VI)	BL	/	
	Br	PBBs	BL	/	
		PBDEs		/	
2	Pb		BL	/	Pass
	Cd		BL	/	
	Hg		BL	/	
	Cr	Cr(VI)	BL	/	
	Br	PBBs	BL	/	
		PBDEs		/	

3	Pb		BL	/	Pass
	Cd		BL	/	
	Hg		BL	/	
	Cr	Cr(VI)	BL	/	
	Br	PBBs	BL	/	
		PBDEs		/	
4	Pb		BL	/	Pass
	Cd		BL	/	
	Hg		BL	/	
	Cr	Cr(VI)	BL	/	
	Br	PBBs	BL	/	
		PBDEs		/	
5	Pb		BL	/	Pass
	Cd		BL	/	
	Hg		BL	/	
	Cr	Cr(VI)	IN	N.D.	
	Br	PBBs	/	/	
		PBDEs		/	
6	Pb		BL	/	Pass
	Cd		BL	/	
	Hg		BL	/	
	Cr	Cr(VI)	BL	/	
	Br	PBBs	BL	/	
		PBDEs		/	
7	Pb		BL	/	Pass
	Cd		BL	/	
	Hg		BL	/	
	Cr	Cr(VI)	BL	/	
	Br	PBBs	BL	/	
		PBDEs		/	
8	Pb		BL	/	Pass
	Cd		BL	/	
	Hg		BL	/	
	Cr	Cr(VI)	BL	/	
	Br	PBBs	BL	/	
		PBDEs		/	
9	Pb		BL	/	Pass
	Cd		BL	/	
	Hg		BL	/	
	Cr	Cr(VI)	IN	N.D.	
	Br	PBBs	/	/	
		PBDEs		/	

10	Pb		BL	/	Pass
	Cd		BL	/	
	Hg		BL	/	
	Cr	Cr(VI)	BL	/	
	Br	PBBs	/	/	
		PBDEs	/	/	
11	Pb		BL	/	Pass
	Cd		BL	/	
	Hg		BL	/	
	Cr	Cr(VI)	BL	/	
	Br	PBBs	BL	/	
		PBDEs	/	/	
12	Pb		BL	/	Pass
	Cd		BL	/	
	Hg		BL	/	
	Cr	Cr(VI)	BL	/	
	Br	PBBs	BL	/	
		PBDEs	/	/	
13	Pb		BL	/	Pass
	Cd		BL	/	
	Hg		BL	/	
	Cr	Cr(VI)	BL	/	
	Br	PBBs	BL	/	
		PBDEs	/	/	
14	Pb		BL	/	Pass
	Cd		BL	/	
	Hg		BL	/	
	Cr	Cr(VI)	BL	/	
	Br	PBBs	BL	/	
		PBDEs	/	/	
15	Pb		BL	/	Pass
	Cd		BL	/	
	Hg		BL	/	
	Cr	Cr(VI)	BL	/	
	Br	PBBs	BL	/	
		PBDEs	/	/	
16	Pb		BL	/	Pass
	Cd		BL	/	
	Hg		BL	/	
	Cr	Cr(VI)	BL	/	
	Br	PBBs	/	/	
		PBDEs	/	/	

17	Pb		BL	/	Pass
	Cd		BL	/	
	Hg		BL	/	
	Cr	Cr(VI)	BL	/	
	Br	PBBs	/	/	
		PBDEs	/	/	
18	Pb		BL	/	Pass
	Cd		BL	/	
	Hg		BL	/	
	Cr	Cr(VI)	BL	/	
	Br	PBBs	/	/	
		PBDEs	/	/	
19	Pb		BL	/	Pass
	Cd		BL	/	
	Hg		BL	/	
	Cr	Cr(VI)	BL	/	
	Br	PBBs	BL	/	
		PBDEs	/	/	
20	Pb		BL	/	Pass
	Cd		BL	/	
	Hg		BL	/	
	Cr	Cr(VI)	BL	/	
	Br	PBBs	/	/	
		PBDEs	/	/	
21	Pb		BL	/	Pass
	Cd		BL	/	
	Hg		BL	/	
	Cr	Cr(VI)	BL	/	
	Br	PBBs	/	/	
		PBDEs	/	/	
22	Pb		BL	/	Pass
	Cd		BL	/	
	Hg		BL	/	
	Cr	Cr(VI)	BL	/	
	Br	PBBs	/	/	
		PBDEs	/	/	
23	Pb		BL	/	Pass
	Cd		BL	/	
	Hg		BL	/	
	Cr	Cr(VI)	BL	/	
	Br	PBBs	/	/	
		PBDEs	/	/	

24	Pb		BL	/	Pass
	Cd		BL	/	
	Hg		BL	/	
	Cr	Cr(VI)	BL	/	
	Br	PBBs	BL	/	
		PBDEs		/	
25	Pb		BL	/	Pass
	Cd		BL	/	
	Hg		BL	/	
	Cr	Cr(VI)	BL	/	
	Br	PBBs	BL	/	
		PBDEs		/	
26	Pb		BL	/	Pass
	Cd		BL	/	
	Hg		BL	/	
	Cr	Cr(VI)	BL	/	
	Br	PBBs	BL	/	
		PBDEs		/	
27	Pb		BL	/	Pass
	Cd		BL	/	
	Hg		BL	/	
	Cr	Cr(VI)	BL	/	
	Br	PBBs	BL	/	
		PBDEs		/	
28	Pb		BL	/	Pass
	Cd		BL	/	
	Hg		BL	/	
	Cr	Cr(VI)	BL	/	
	Br	PBBs	/	/	
		PBDEs		/	
29	Pb		BL	/	Pass
	Cd		BL	/	
	Hg		BL	/	
	Cr	Cr(VI)	BL	/	
	Br	PBBs	BL	/	
		PBDEs		/	
30	Pb		BL	/	Pass
	Cd		BL	/	
	Hg		BL	/	
	Cr	Cr(VI)	BL	/	
	Br	PBBs	BL	/	
		PBDEs		/	

31	Pb		BL	/	Pass
	Cd		BL	/	
	Hg		BL	/	
	Cr	Cr(VI)	BL	/	
	Br	PBBs	BL	/	
		PBDEs		/	
32	Pb		BL	/	Pass
	Cd		BL	/	
	Hg		BL	/	
	Cr	Cr(VI)	BL	/	
	Br	PBBs	BL	/	
		PBDEs		/	
33	Pb		BL	/	Pass
	Cd		BL	/	
	Hg		BL	/	
	Cr	Cr(VI)	BL	/	
	Br	PBBs	BL	/	
		PBDEs		/	
34	Pb		BL	/	Pass
	Cd		BL	/	
	Hg		BL	/	
	Cr	Cr(VI)	BL	/	
	Br	PBBs	/	/	
		PBDEs		/	
35	Pb		BL	/	Pass
	Cd		BL	/	
	Hg		BL	/	
	Cr	Cr(VI)	BL	/	
	Br	PBBs	IN	N.D.	
		PBDEs		N.D.	
36	Pb		BL	/	Pass
	Cd		BL	/	
	Hg		BL	/	
	Cr	Cr(VI)	IN	N.D.	
	Br	PBBs	/	/	
		PBDEs		/	
37	Pb		BL	/	Pass
	Cd		BL	/	
	Hg		BL	/	
	Cr	Cr(VI)	BL	/	
	Br	PBBs	BL	/	
		PBDEs		/	



38	Pb		BL	/	Pass
	Cd		BL	/	
	Hg		BL	/	
	Cr	Cr(VI)	BL	/	
	Br	PBBs	/	/	
PBDEs		/	/		
39	Pb		BL	/	Pass
	Cd		BL	/	
	Hg		BL	/	
	Cr	Cr(VI)	BL	/	
	Br	PBBs	BL	/	
PBDEs		/	/		
40	Pb		BL	/	Pass
	Cd		BL	/	
	Hg		BL	/	
	Cr	Cr(VI)	BL	/	
	Br	PBBs	/	/	
PBDEs		/	/		
41	Pb		BL	/	Pass
	Cd		BL	/	
	Hg		BL	/	
	Cr	Cr(VI)	IN	N.D.	
	Br	PBBs	/	/	
PBDEs		/	/		
42	Pb		BL	/	Pass
	Cd		BL	/	
	Hg		BL	/	
	Cr	Cr(VI)	BL	/	
	Br	PBBs	BL	/	
PBDEs		/	/		
43	Pb		BL	/	Pass
	Cd		BL	/	
	Hg		BL	/	
	Cr	Cr(VI)	BL	/	
	Br	PBBs	/	/	
PBDEs		/	/		
44	Pb		BL	/	Pass
	Cd		BL	/	
	Hg		BL	/	
	Cr	Cr(VI)	BL	/	
	Br	PBBs	/	/	
PBDEs		/	/		

45	Pb		BL	/	Pass
	Cd		BL	/	
	Hg		BL	/	
	Cr	Cr(VI)	BL	/	
	Br	PBBs	/	/	
PBDEs		/	/		
46	Pb		BL	/	Pass
	Cd		BL	/	
	Hg		BL	/	
	Cr	Cr(VI)	BL	/	
	Br	PBBs	/	/	
PBDEs		/	/		
47	Pb		BL	/	Pass
	Cd		BL	/	
	Hg		BL	/	
	Cr	Cr(VI)	BL	/	
	Br	PBBs	BL	/	
PBDEs		/	/		
48	Pb		BL	/	Pass
	Cd		BL	/	
	Hg		BL	/	
	Cr	Cr(VI)	BL	/	
	Br	PBBs	BL	/	
PBDEs		/	/		
49	Pb		BL	/	Pass
	Cd		BL	/	
	Hg		BL	/	
	Cr	Cr(VI)	BL	/	
	Br	PBBs	/	/	
PBDEs		/	/		
50	Pb		BL	/	Pass
	Cd		BL	/	
	Hg		BL	/	
	Cr	Cr(VI)	BL	/	
	Br	PBBs	BL	/	
PBDEs		/	/		
51	Pb		BL	/	Pass
	Cd		BL	/	
	Hg		BL	/	
	Cr	Cr(VI)	BL	/	
	Br	PBBs	IN	N.D.	
PBDEs		IN	N.D.		

52	Pb		BL	/	Pass
	Cd		BL	/	
	Hg		BL	/	
	Cr	Cr(VI)	BL	/	
	Br	PBBs	BL	/	
PBDEs		/			
53	Pb		BL	/	Pass
	Cd		BL	/	
	Hg		BL	/	
	Cr	Cr(VI)	BL	/	
	Br	PBBs	/	/	
PBDEs		/			
54	Pb		BL	/	Pass
	Cd		BL	/	
	Hg		BL	/	
	Cr	Cr(VI)	BL	/	
	Br	PBBs	BL	/	
PBDEs		/			
55	Pb		BL	/	Pass
	Cd		BL	/	
	Hg		BL	/	
	Cr	Cr(VI)	BL	/	
	Br	PBBs	BL	/	
PBDEs		/			
56	Pb		BL	/	Pass
	Cd		BL	/	
	Hg		BL	/	
	Cr	Cr(VI)	BL	/	
	Br	PBBs	BL	/	
PBDEs		/			
57	Pb		BL	/	Pass
	Cd		BL	/	
	Hg		BL	/	
	Cr	Cr(VI)	BL	/	
	Br	PBBs	IN	N.D.	
PBDEs		N.D.			
58	Pb		BL	/	Pass
	Cd		BL	/	
	Hg		BL	/	
	Cr	Cr(VI)	BL	/	
	Br	PBBs	/	/	
PBDEs		/			

59	Pb		BL	/	Pass
	Cd		BL	/	
	Hg		BL	/	
	Cr	Cr(VI)	BL	/	
	Br	PBBs	/	/	
PBDEs		/	/		
60	Pb		BL	/	Pass
	Cd		BL	/	
	Hg		BL	/	
	Cr	Cr(VI)	IN	N.D.	
	Br	PBBs	BL	/	
PBDEs		BL	/		
61	Pb		BL	/	Pass
	Cd		BL	/	
	Hg		BL	/	
	Cr	Cr(VI)	BL	/	
	Br	PBBs	BL	/	
PBDEs		BL	/		
62	Pb		BL	/	Pass
	Cd		BL	/	
	Hg		BL	/	
	Cr	Cr(VI)	BL	/	
	Br	PBBs	BL	/	
PBDEs		BL	/		
63	Pb		BL	/	Pass
	Cd		BL	/	
	Hg		BL	/	
	Cr	Cr(VI)	BL	/	
	Br	PBBs	/	/	
PBDEs		/	/		

**Bis-(2-ethylhexyl) Phthalate (DEHP), Benzyl butyl Phthalate (BBP), Dibutyl Phthalate (DBP) and Diisobutyl Phthalate(DIBP)**

Test Items	Result(mg/kg)		
	1+2+3	4+6+7	8+11+12
Bis-(2-ethylhexyl) Phthalate (DEHP)	N.D.	N.D.	N.D.
Benzyl butyl Phthalate (BBP)	N.D.	N.D.	N.D.
Dibutyl Phthalate (DBP)	N.D.	N.D.	N.D.
Diisobutyl Phthalate(DIBP)	N.D.	N.D.	N.D.
Conclusion	Pass	Pass	Pass

Test Items	Result(mg/kg)		
	13	14+15	19+24+25
Bis-(2-ethylhexyl) Phthalate (DEHP)	N.D.	142	N.D.
Benzyl butyl Phthalate (BBP)	N.D.	N.D.	N.D.
Dibutyl Phthalate (DBP)	N.D.	N.D.	N.D.
Diisobutyl Phthalate(DIBP)	N.D.	N.D.	N.D.
Conclusion	Pass	Pass	Pass

Test Items	Result(mg/kg)		
	26+27+29	30+31+32	33+37
Bis-(2-ethylhexyl) Phthalate (DEHP)	N.D.	N.D.	N.D.
Benzyl butyl Phthalate (BBP)	N.D.	N.D.	N.D.
Dibutyl Phthalate (DBP)	N.D.	N.D.	N.D.
Diisobutyl Phthalate(DIBP)	N.D.	N.D.	N.D.
Conclusion	Pass	Pass	Pass

Test Items	Result(mg/kg)		
	35	39+42	47
Bis-(2-ethylhexyl) Phthalate (DEHP)	N.D.	N.D.	N.D.
Benzyl butyl Phthalate (BBP)	N.D.	N.D.	N.D.
Dibutyl Phthalate (DBP)	N.D.	N.D.	N.D.
Diisobutyl Phthalate(DIBP)	N.D.	N.D.	N.D.
Conclusion	Pass	Pass	Pass

Test Items	Result(mg/kg)		
	48+50	51	52+53+54
Bis-(2-ethylhexyl) Phthalate (DEHP)	N.D.	N.D.	N.D.
Benzyl butyl Phthalate (BBP)	N.D.	N.D.	N.D.
Dibutyl Phthalate (DBP)	N.D.	N.D.	N.D.
Diisobutyl Phthalate(DIBP)	N.D.	N.D.	N.D.
Conclusion	Pass	Pass	Pass

Test Items	Result(mg/kg)		
	55+56	57	60
Bis-(2-ethylhexyl) Phthalate (DEHP)	N.D.	N.D.	N.D.
Benzyl butyl Phthalate (BBP)	N.D.	N.D.	N.D.
Dibutyl Phthalate (DBP)	N.D.	N.D.	N.D.
Diisobutyl Phthalate(DIBP)	N.D.	N.D.	N.D.
Conclusion	Pass	Pass	Pass

Test Items	Result(mg/kg)
	61+62
Bis-(2-ethylhexyl) Phthalate (DEHP)	N.D.
Benzyl butyl Phthalate (BBP)	N.D.
Dibutyl Phthalate (DBP)	N.D.
Diisobutyl Phthalate(DIBP)	N.D.
Conclusion	Pass

Note:

- 1.N.D. = Not Detected (<MDL)  
 MDL = Method Detection Limit  
 1 mg/kg = 1ppm =0.0001%  
 /=Not Regulated or Not Applicable
2. BL = Below the XRF screening limit  
 IN = Further chemical test will be conducted when the screening result inconclusive  
 OL = Further chemical test will be conducted while the result is above the screening limit.
3. For metal samples, the sample is negative for Cr(VI), if the Cr(VI) concentration is less than 0.10  $\mu\text{g}/\text{cm}^2$ , the coating is considered a non- Cr(VI) based coating;  
 The sample is positive for Cr(VI), if the Cr(VI) concentration is greater than 0.13  $\mu\text{g}/\text{cm}^2$ ,  
 The sample coating is considered to contain Cr(VI);  
 The result is considered to be inconclusive, the Cr(VI) concentration is between the 0.10  $\mu\text{g}/\text{cm}^2$  and 0.13  $\mu\text{g}/\text{cm}^2$ , unavoidable coating variations may influence the determination.  
 Because the storage condition and production date of the sample are not known, the test results of the sample of hexavalent chromium can only represent the state of hexavalent chromium in the samples tested.

Remark: 1. When conducting the test for PBBs&PBDEs, XRF was introduced to screen Br Exclusively; When conducting the test for Hexavalent Chromium, XRF was introduced to screen Chromium exclusively.

**Test Method:**

1. With reference to IEC 62321-1: 2013 Ed.1.0, IEC 62321-2:2021 Ed.2.0, IEC 62321-3-1:2013 Ed.1.0. XRF screening limits in mg/kg for regulated elements in various matrices.

Element	Limit of IEC 62321-3-1:2013 Ed.1.0 (mg/kg)		
	Polymers	Metals	Composite material
Pb	$BL \leq (700-3\sigma) < X$ $< (1300+3\sigma) \leq OL$	$BL \leq (700-3\sigma) < X$ $< (1300+3\sigma) \leq OL$	$BL \leq (500-3\sigma) < X$ $< (1500+3\sigma) \leq OL$
Cd	$BL \leq (70-3\sigma) < X <$ $(130+3\sigma) \leq OL$	$BL \leq (70-3\sigma) < X <$ $(130+3\sigma) \leq OL$	$LOD < X < (150+3\sigma)$ $\leq OL$
Hg	$BL \leq (700-3\sigma) < X$ $< (1300+3\sigma) \leq OL$	$BL \leq (700-3\sigma) < X$ $< (1300+3\sigma) \leq OL$	$BL \leq (500-3\sigma) < X$ $< (1500+3\sigma) \leq OL$
Cr	$BL \leq (700-3\sigma) < X$	$BL \leq (700-3\sigma) < X$	$BL \leq (500-3\sigma) < X$
Br	$BL \leq (300-3\sigma) < X$	/	$BL \leq (250-3\sigma) < X$

Note: BL= Below the XRF screening limit  
 OL=Over the XRF screening limit  
 X=The symbol "X" marks the region where further investigation is necessary.  
 $3\sigma$  =The reproducibility of analytical instruments  
 LOD= Detection limit

## 2. Chemical Test

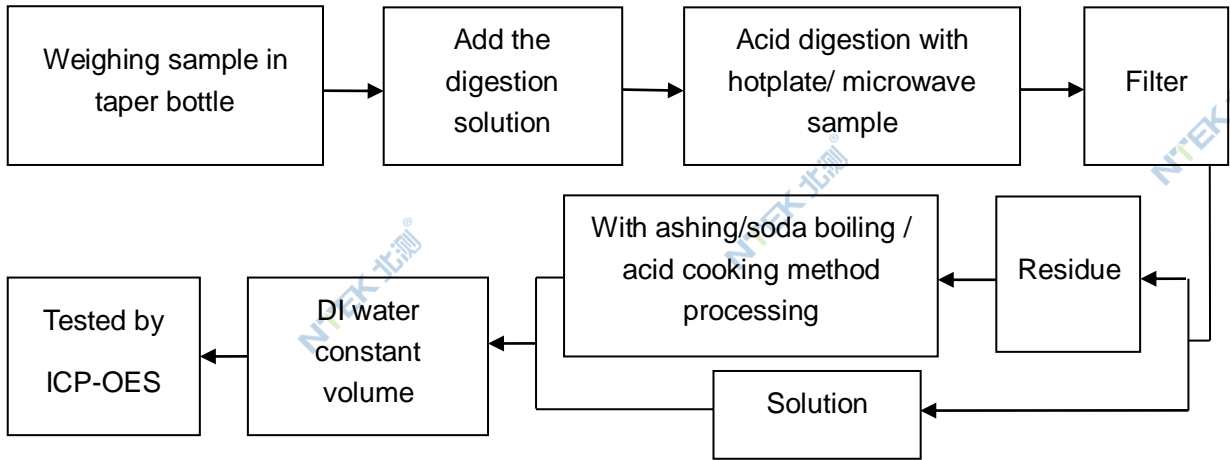
Test item	Test method	Test instrument	MDL	Limit <sup>△</sup>
Lead (Pb)	IEC 62321-5:2013 Ed.1.0	ICP-OES	2 mg/kg	1000 mg/kg
Cadmium (Cd)	IEC 62321-5:2013 Ed.1.0	ICP-OES	2 mg/kg	100 mg/kg
Mercury (Hg)	IEC 62321-4:2013+AMD1:2017	ICP-OES	2 mg/kg	1000 mg/kg
Hexavalent Chromium(Cr(VI))	IEC 62321-7-1:2015 Ed.1.0	UV-Vis	0.10 µg/cm <sup>2</sup>	1000 mg/kg
	IEC 62321-7-2:2017 Ed.1.0		8 mg/kg	
Polybrominated Biphenyls(PBBs)	IEC 62321-6:2015 Ed.1.0	GC-MS	5 mg/kg	1000 mg/kg
Polybrominated, Diphenyl Ethers(PBDEs)	IEC 62321-6:2015 Ed.1.0	GC-MS	5 mg/kg	1000 mg/kg
Bis-(2-ethylhexyl) Phthalate (DEHP)	IEC 62321-8:2017 Ed.1.0	GC-MS	30 mg/kg	1000 mg/kg
Benzyl butyl Phthalate (BBP)	IEC 62321-8:2017 Ed.1.0	GC-MS	30 mg/kg	1000 mg/kg
Dibutyl Phthalate (DBP)	IEC 62321-8:2017 Ed.1.0	GC-MS	30 mg/kg	1000 mg/kg
Diisobutyl Phthalate (DIBP)	IEC 62321-8:2017 Ed.1.0	GC-MS	30 mg/kg	1000 mg/kg

<sup>△</sup>The limit is quoted from RoHS Directive (EU) 2015/863 amending Annex II to Directive 2011/65/EU.



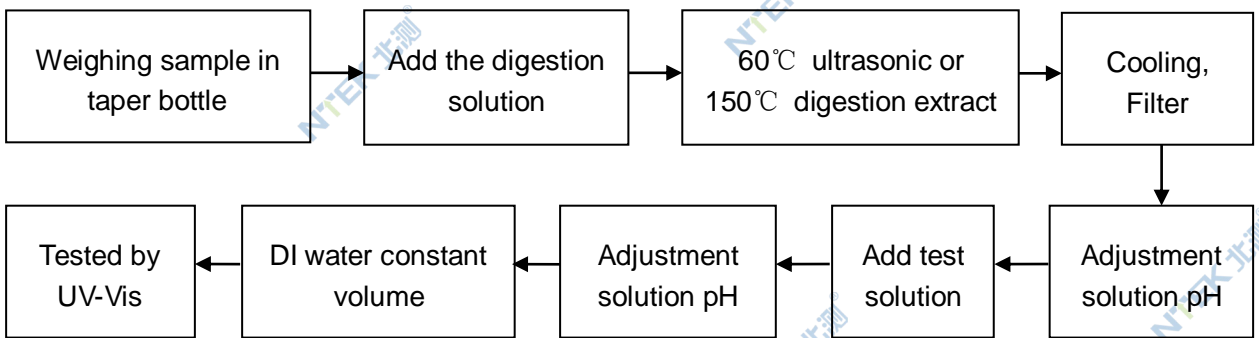
**Test Flow:**

1. Lead(Pb), Cadmium(Cd) , Mercury (Hg)

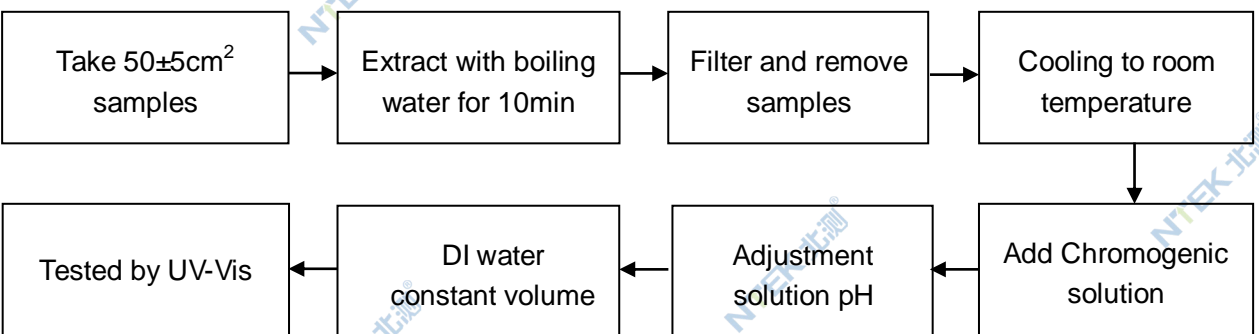


2. Hexavalent Chromium(Cr(VI))

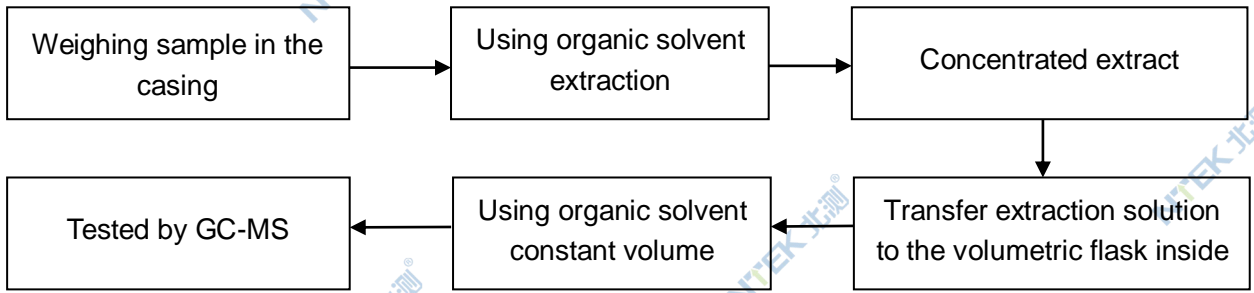
2.1 Non- metal sample(s)



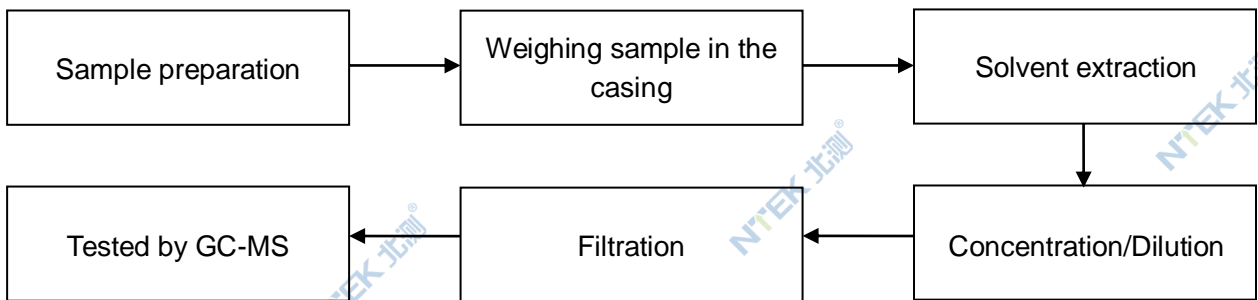
2.2 Metal sample(s)



3. PBBs/ PBDEs



4. Phthalates



**Sample photo(s):**



Fig.1 (Finished photo)



Fig.2 (Finished photo)



Fig.3 (Finished photo)

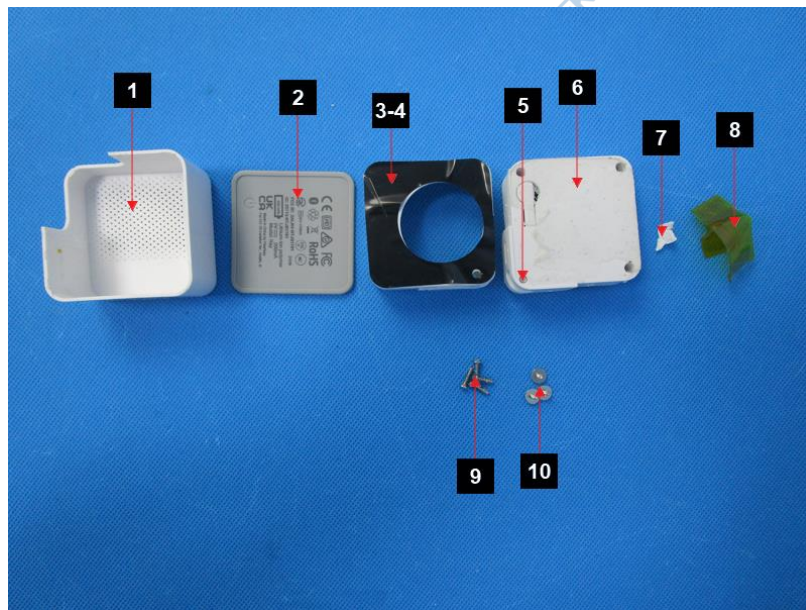


Fig.4





Fig.5

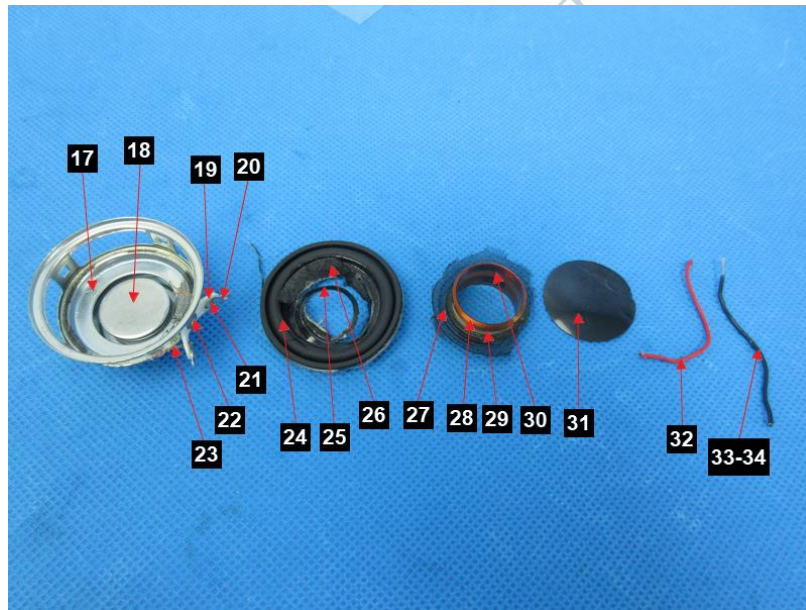


Fig.6

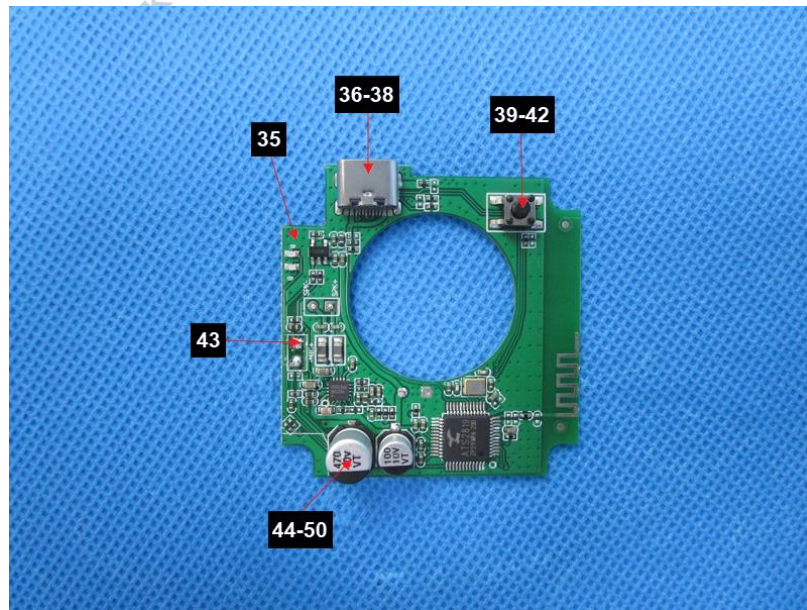


Fig.7

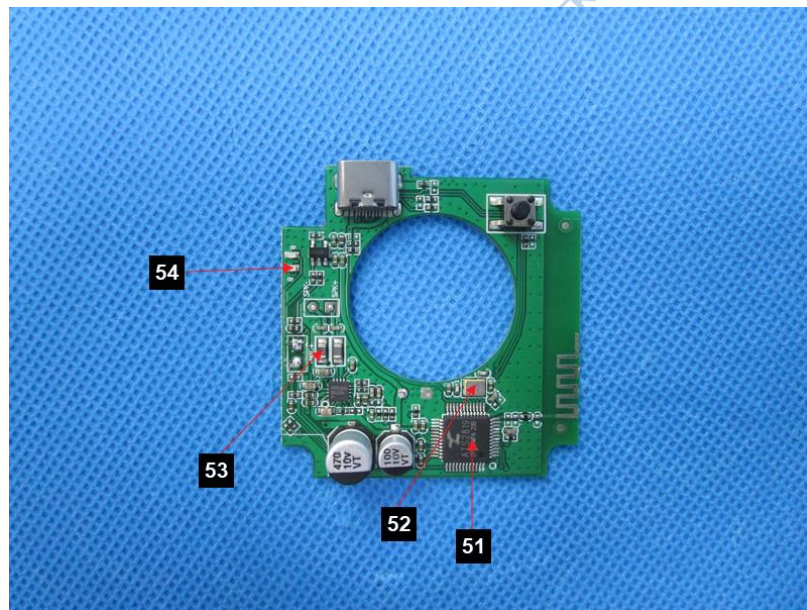


Fig.8



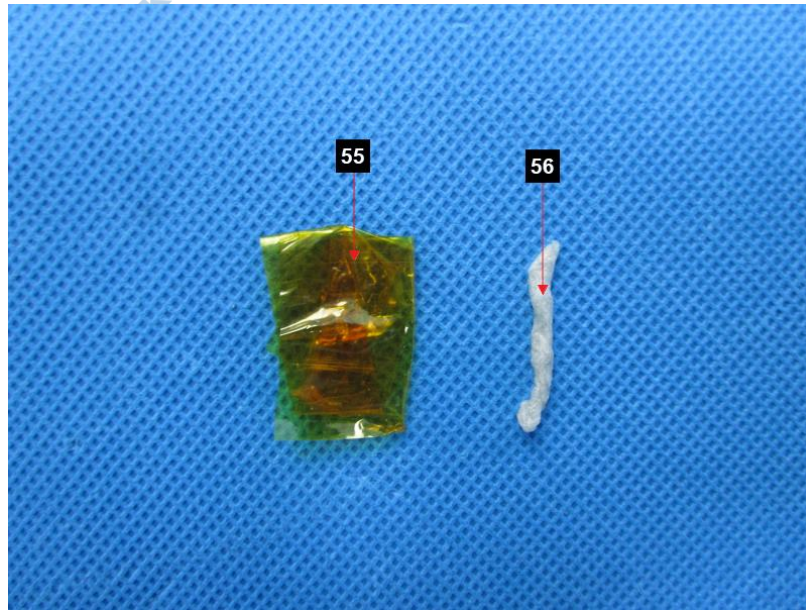


Fig.9

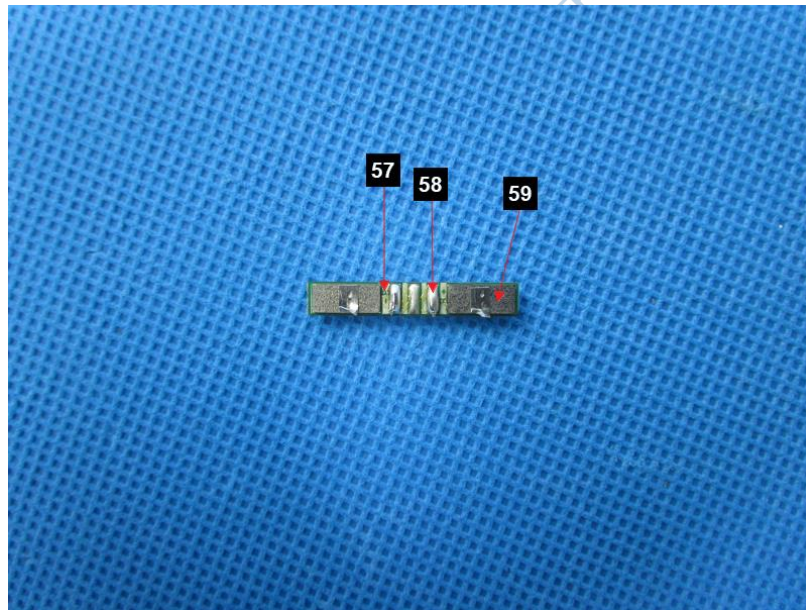


Fig.10

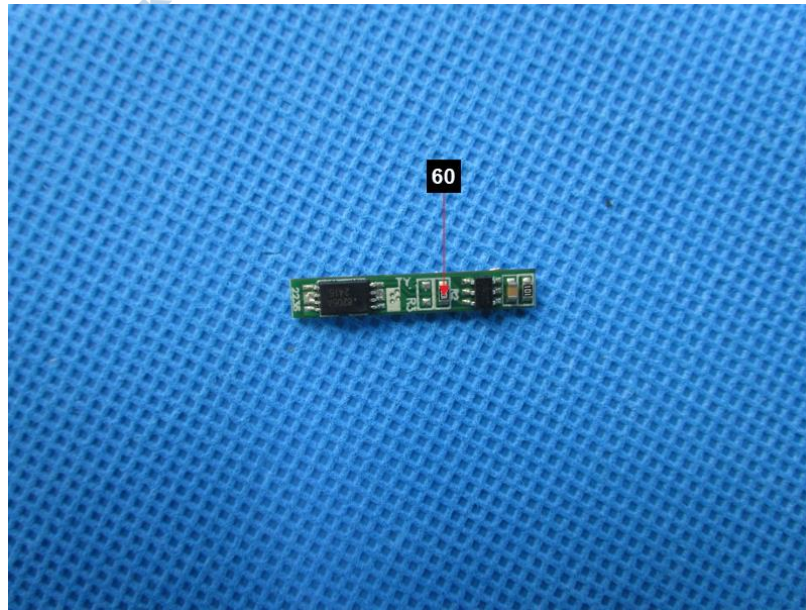


Fig.11

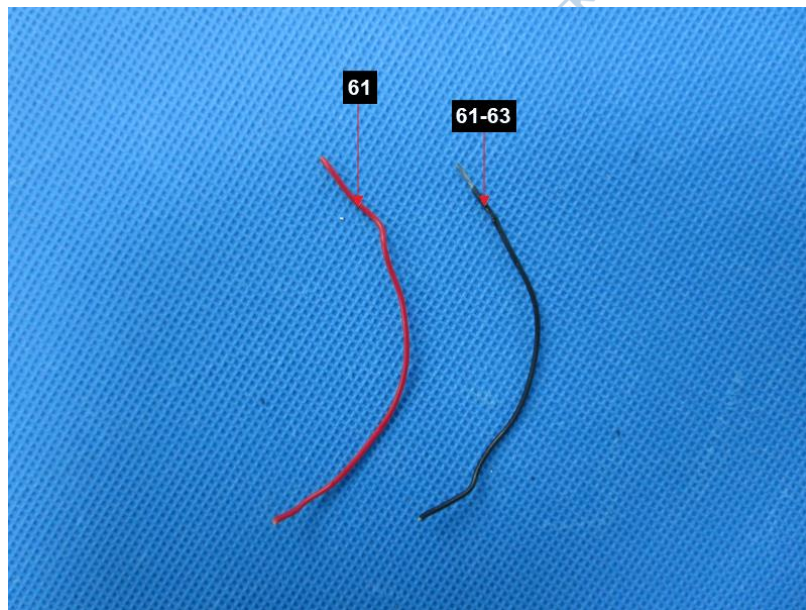


Fig.12

\*\*\*\*End of Report\*\*\*\*

The test results or data in this report will be used only for education, scientific research, enterprise product development and internal quality control or other purposes.

The test report is effective only with both signature and specialized stamp, The result(s) shown in this report refer only to the sample(s) tested. Without written approval of NTEK, this report can't be reproduced except in full.